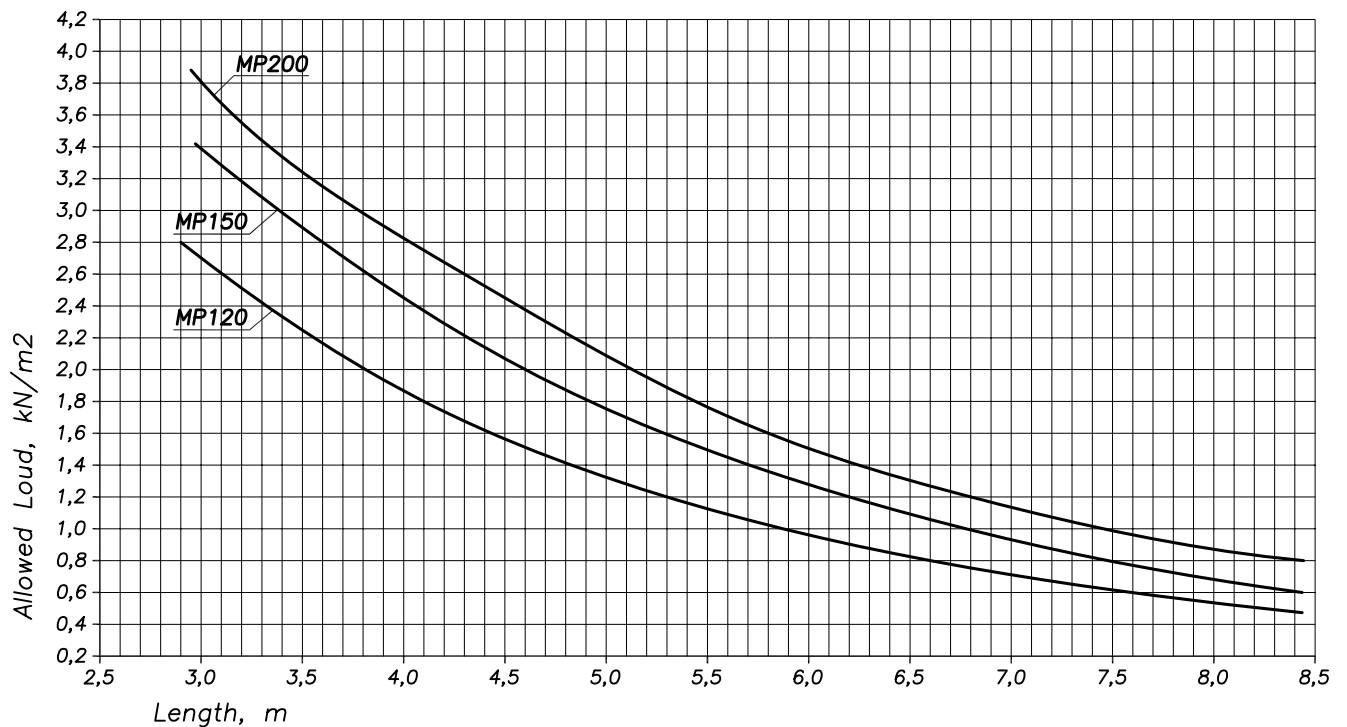
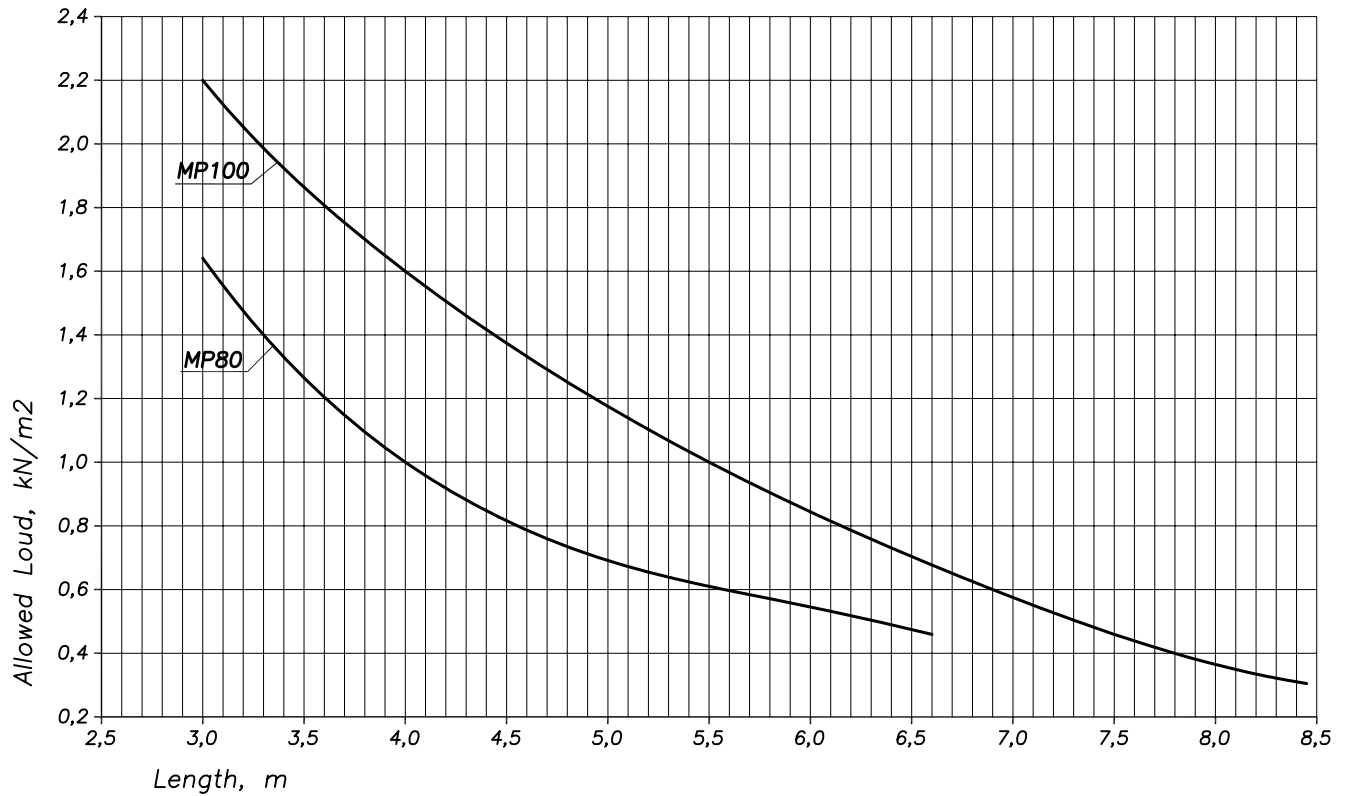


Safe loads on the panel

Spans for single-span walls

Support width 50 mm and thickness of steel $t(\text{ext})=0,6$ mm, $t(\text{int})=0,5$ mm.



Safe loads on the panel

Page 5

2008

www.stroypanel.ru

list5.dwg

Technical data



OOO "Stroypanel"
(812) 334-81-13