

Cladding details

Interface to a roof

Interface to a roof

Page 26

2008

www.stroypanel.ru

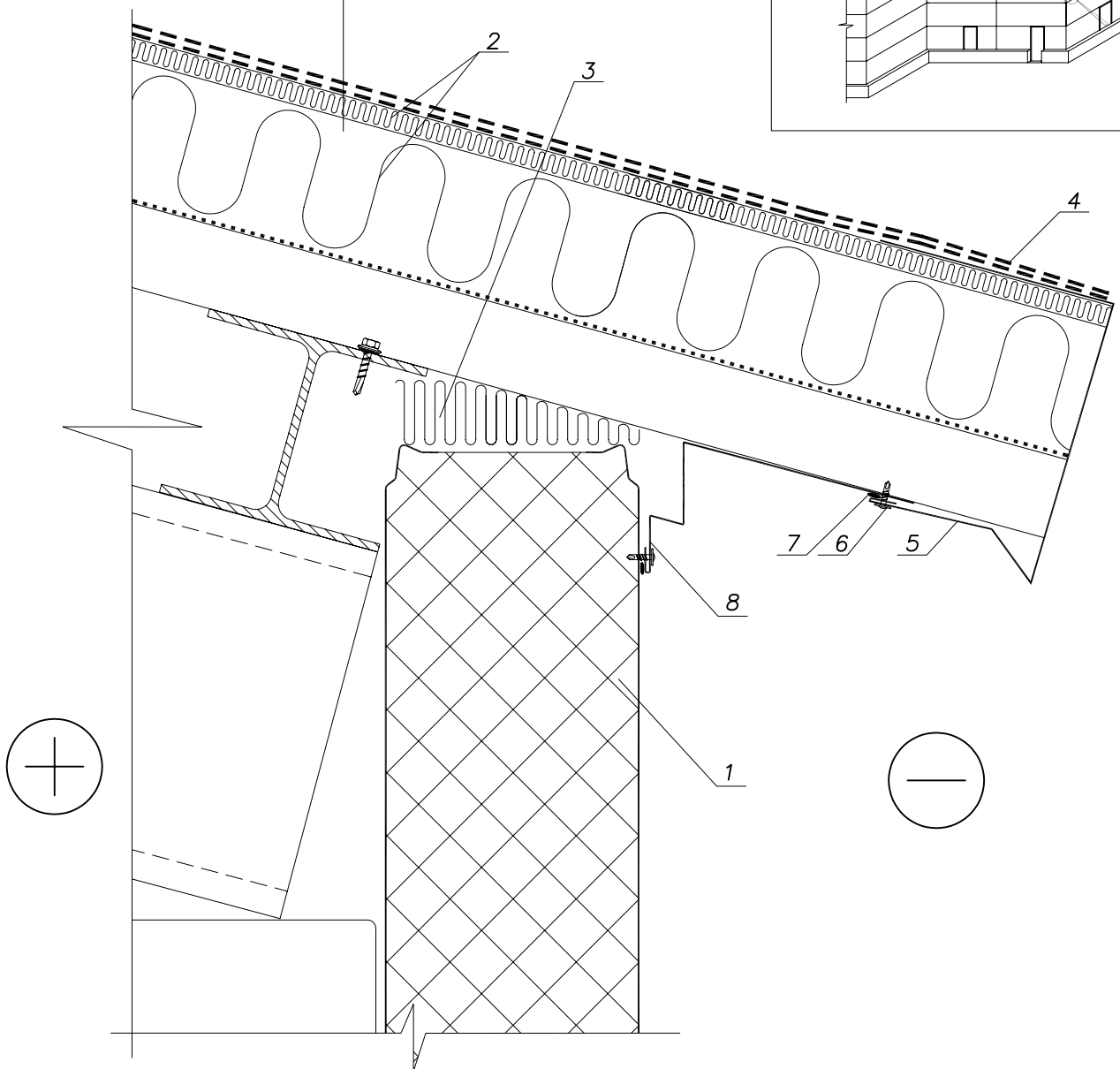
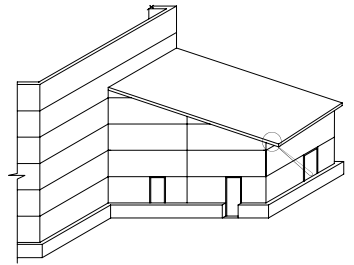
list26.dwg

Cladding details



OOO "Stroypanel"
(812) 334-81-13

The roof is shown conditionally



1. Panel
2. Mineral plate
3. Rock wool (page 39)
4. Water coating
5. Flashing
6. Flashing screw cc 300 mm (page 38)
7. Flashing saeling
8. Flashing

Interface to a roof

Page 27

2008

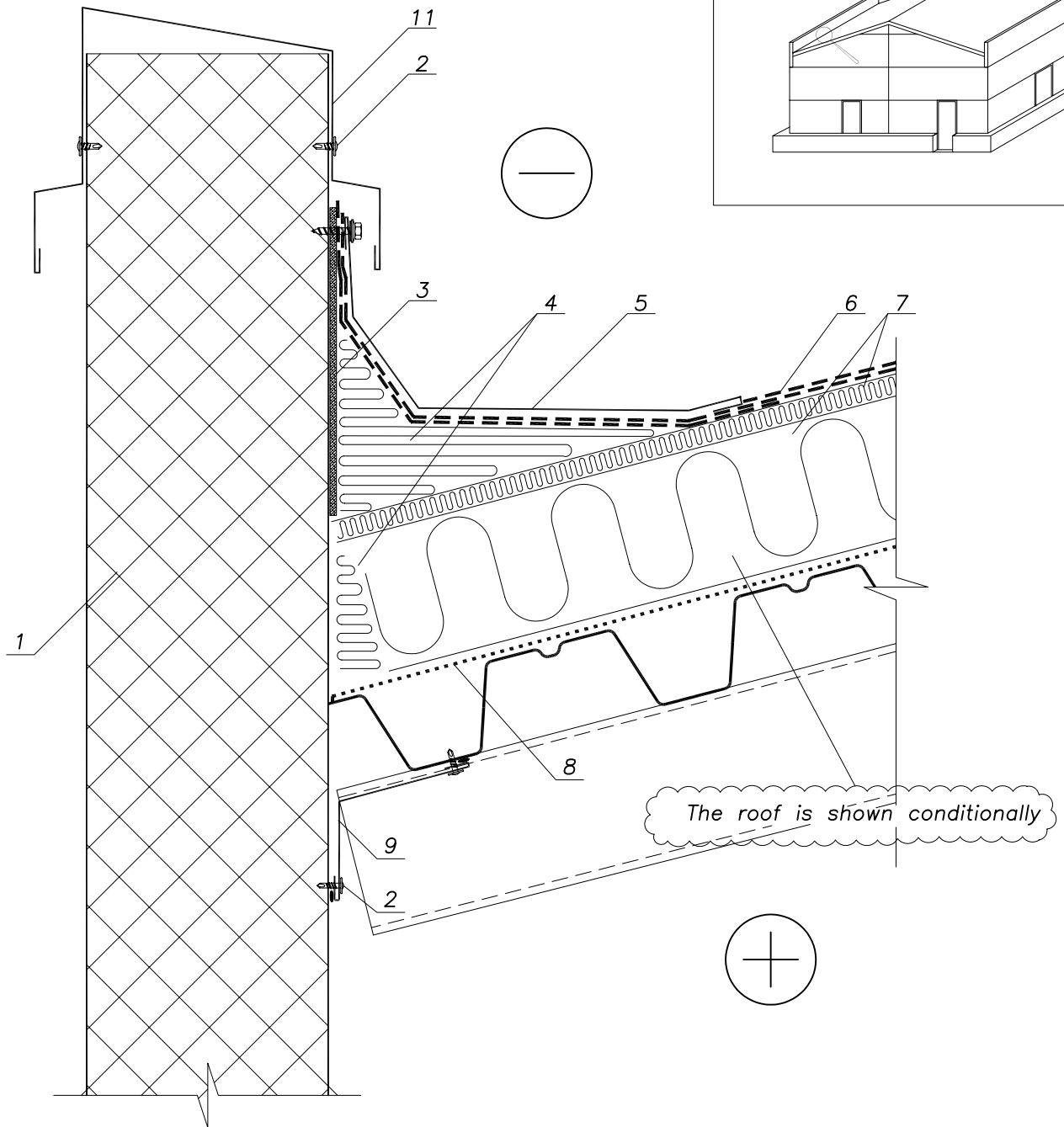
www.stroypanel.ru

list27.dwg

Interface to a roof



OOO "Stroypanel"
(812) 334-81-13



1. Panel
2. Flashing screw cc 300 mm (page 38)
3. Veneer wood
4. Rock wool (page 39)
5. Flashing
6. Water coating
7. Mineral plate
8. Vapor sealing
9. Flashing (page 40,41)
10. Flashing (page 40,41)

Interface to a roof

Page 28

2008

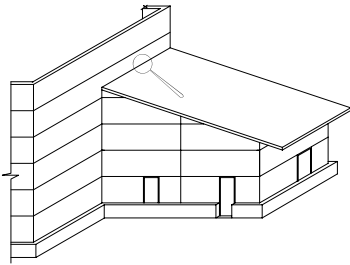
www.stroypanel.ru

list28.dwg

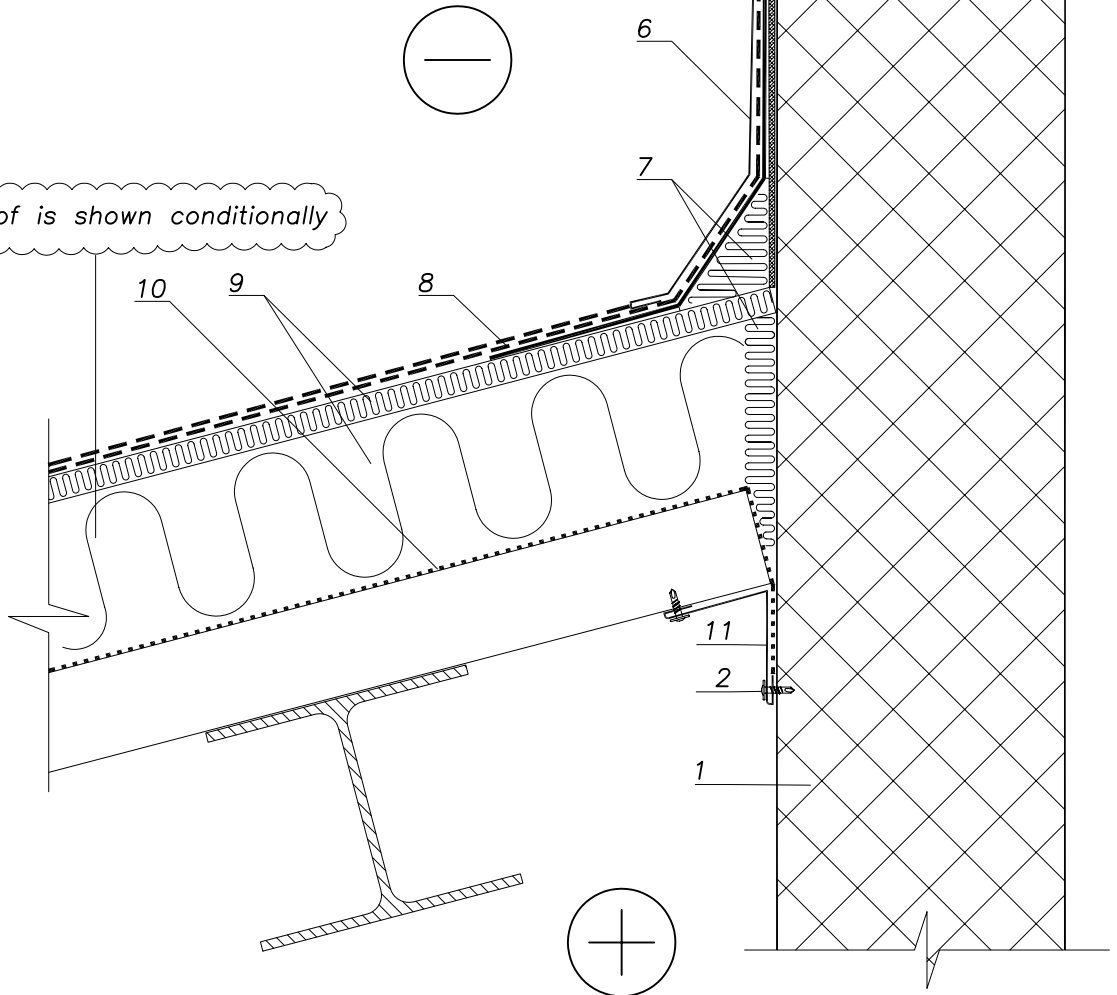
Interface to a roof



OOO "Stroypanel"
(812) 334-81-13



The roof is shown conditionally



1. Panel
2. Flashing screw cc 300 mm (page 38)
3. Veneer wood
4. Flashing
5. Screw KRS (page 38)
6. Flashing
7. Rock wool (page 39)
8. Water coating
9. Mineral plate
10. Vapor sealing
11. Flashing
12. Flashing saeling

Interface to a roof

Page 29

2008

www.stroypanel.ru

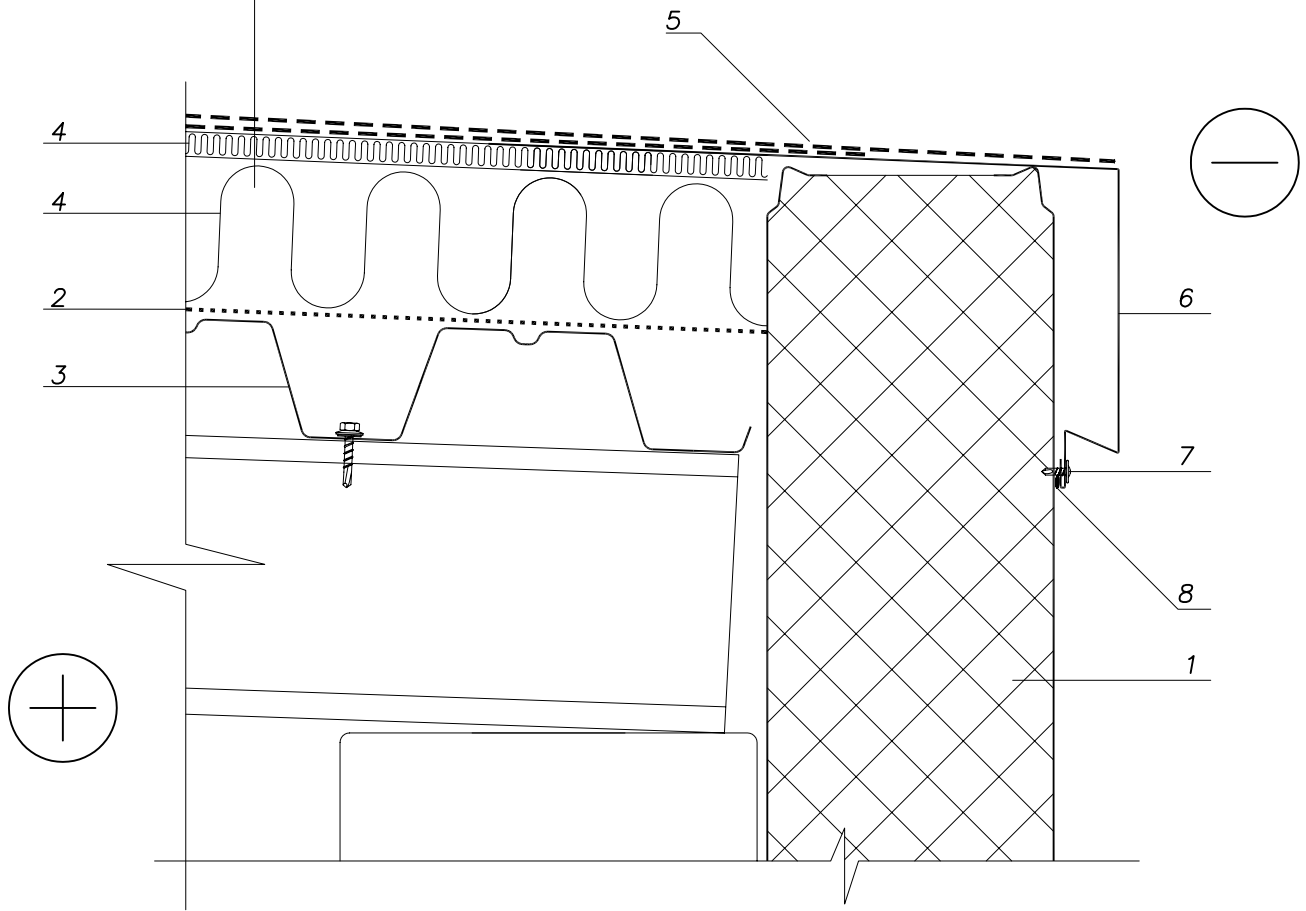
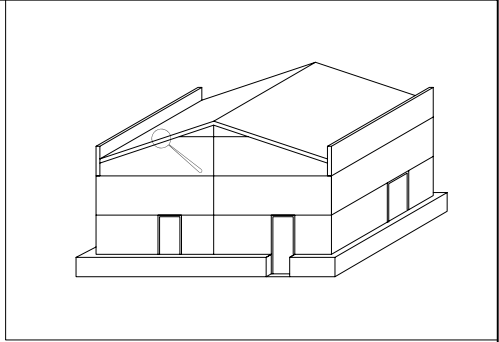
list29.dwg

Interface to a roof



OOO "Stroypanel"
(812) 334-81-13

The roof is shown conditionally




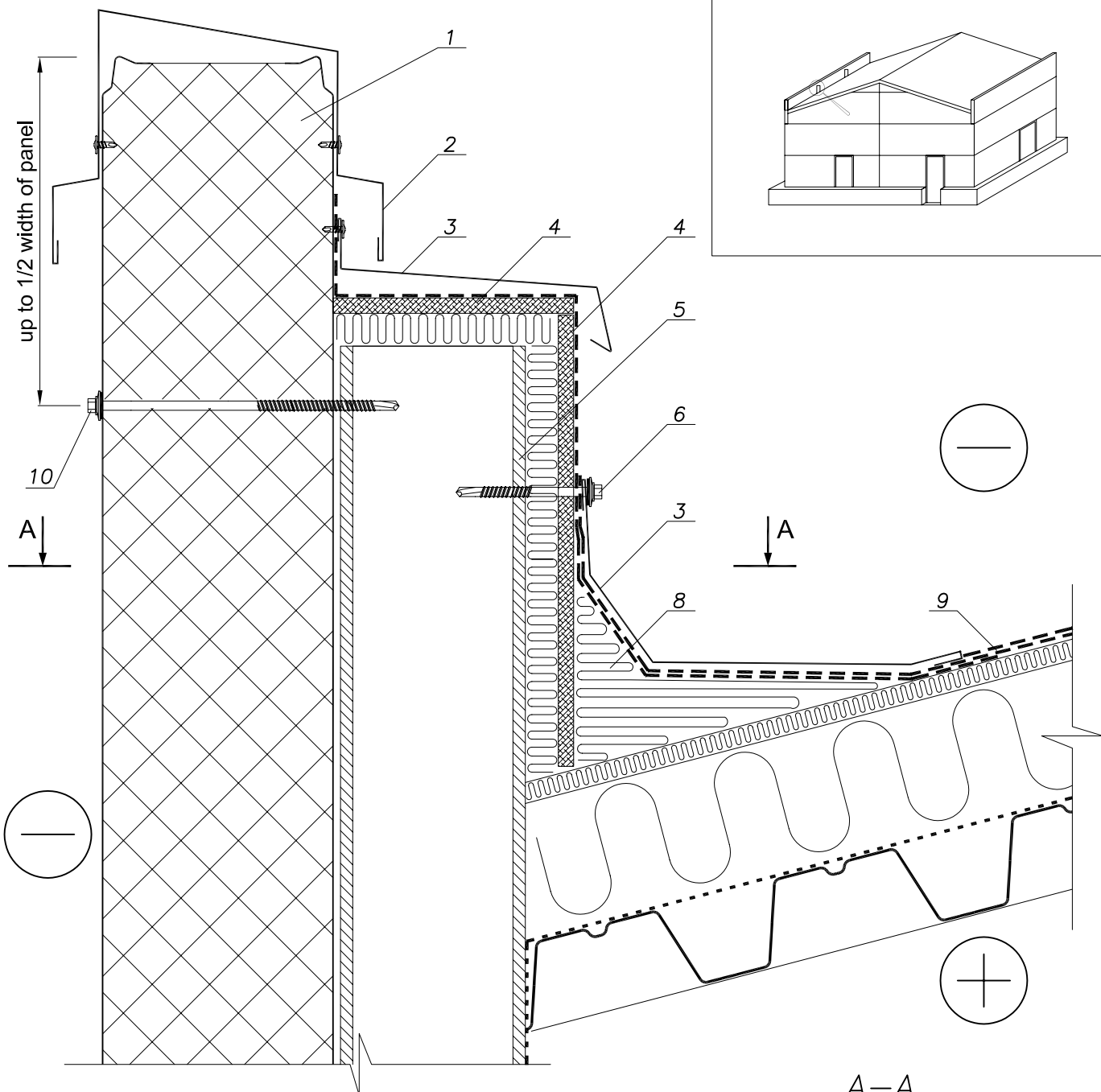
- 1. Panel
- 2. Vapor sealing
- 3. Shaped steel sheet
- 4. Mineral plate
- 5. Water coating
- 6. Flashing
- 7. Flashing screw cc 300 mm (page 38)
- 8. Flashing saeling

Interface to a roof

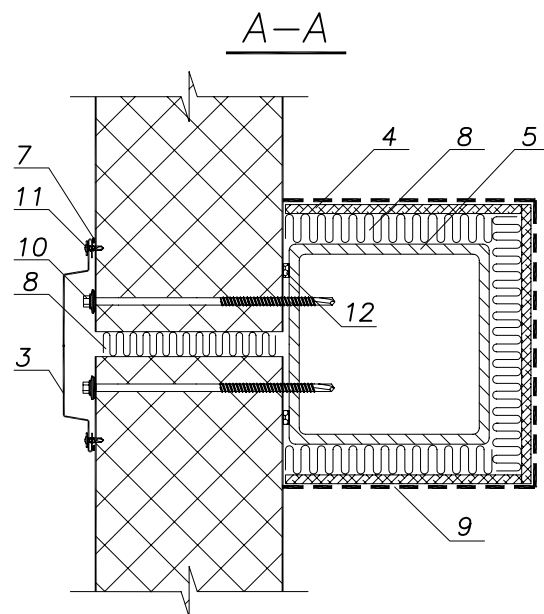
Page 30	2008
www.stroypanel.ru	list30.dwg

Interface to a roof

 000 "Stroypanel"
(812) 334-81-13



1. Panel
2. Flashing (page 40,41)
3. Flashing
4. Veneer wood
5. Steel column
6. Screw KRS (page 38)
7. Flashing saeling
8. Rock wool (page 39)
9. Water coating
10. Self-drilling screw (page 38)
11. Flashing screw cc 300 mm (page 38)
12. Vapour sealant tape 6x14 mm (page 39)



Interface to a roof

Page 31

2008

www.stroypanel.ru

list31.dwg

Interface to a roof



OOO "Stroypanel"
(812) 334-81-13